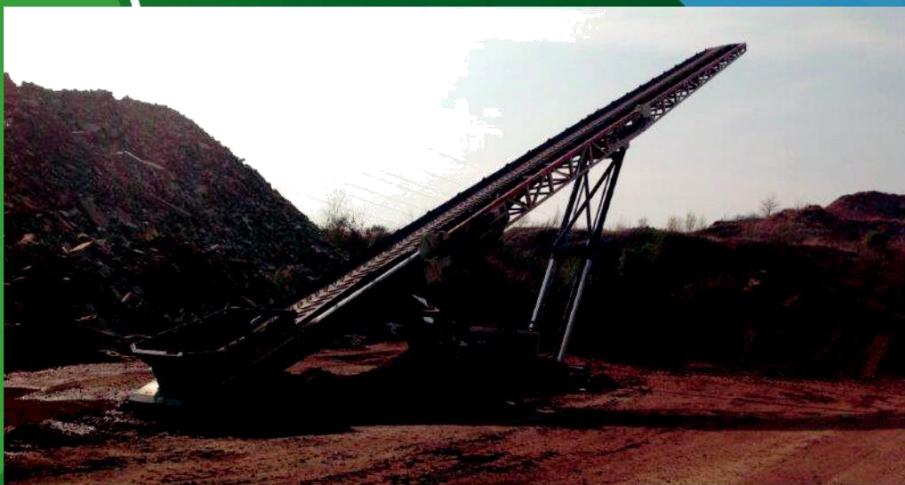




# MC 1050-30T TRACK CONVEYOR



A leading manufacturer of screening and conveyor equipment, offer the MC1050-30T tracked stacking conveyor, the ideal solution for jobs that require high production stockpiling or material transfer.

## **Irish Manufacturing Services Limited**

34a Dunroe Road, Clogher, Co.  
Tyrone, N. Ireland, BT76 0DZ

**T:** +44 (0)28 8554 9656

**E:** [info@ims-ltd.ie](mailto:info@ims-ltd.ie)

## **Irish Manufacturing Services Ltd**

[www.ims-ltd.ie](http://www.ims-ltd.ie)



## Heavy Duty Construction

Heavy Duty lattice angle construction to give added stability and to withstand the rigours of heavy duty operation.

## Conveyor

The conveyor is constructed in 3 sections, the tail section includes a generous feed hopper and the head section includes the conveyor drive, consisting of twin Sauer-Danfoss hydraulic motors coupled to a rubber lagged drive pulley.

## Diesel-Hydraulic Power Unit

The conveyor is powered by a Deutz TD2011 49.4kw air cooled Diesel Engine coupled to a tandem hydraulic pump giving sufficient oil flow to drive both the conveyor at maximum output and to operate the crawler tracks.

## Undercarriage

The undercarriage consists of the hydraulically operated crawler tracks together with an adjustable support trestle arrangement, which allows variation in both feed and discharge heights.

## Hydraulic Folding Mechanism

The folding mechanism of the conveyor head and tail sections allow for quick site set up and provides a flexible approach to transport of the unit. The hydraulic folding is designed so that the hydraulic cylinder piston rods are fully protected when the machine is operational.

## Emergency Stop System

Every MC1050-30T track Conveyor is equipped from the factory with an emergency stop system that will render the plant inoperable when activated, providing added safety for the operator.

## Standard Features

- Crawler Track Movement
- 49.4 kw Diesel-Hydraulic Drive
- 1050mm (42") wide 3 ply belt
- Hydraulic Folding on Head Section
- Hydraulic Folding of Tail Section
- Hydraulic Raise and Lower

## Options

Heavy Duty Belt	Chevron Belt	Feed Impact Bars
Conveyor Belt Variable Speed Control		
Dual Power: Electric & Diesel / Hydraulic Power Unit	PVC covers	Galvanised Steel Covers
Pull Cord Emergency Stops	Feedboot Mild Steel Wear Plates	Feedboot Hardox Wearplates
Feedboot Extensions	Radio Remote Control	

## Specifications

- Operational length 30M" (100')
- Operational height 13M" (42'8")
- Loading height 1.2M – 3.4M (4'0" – 11' 3")
- Hydraulic tank capacity 377 l (83 gallon)
- Diesel fuel capacity 216 l (48 gallon)
- Engine make/model Deutz TD2011
- Engine Type 4 cylinder air cooled
- Engine power (horsepower) 49.4kw (66 HP)
- Transport width 2.25 M (7'4")
- Transport height 2.5 M" (8'2")
- Transport length 12.2M (40' 3")
- Total weight 13200 kgs (29040 lbs)

*Due to Irish Manufacturing Services Limited's policy of continuing product improvements, specifications are subject to change without notice or obligation. No representation is made that the products depicted herein comply with any laws, codes, rules, regulations or standards. Compliance is the responsibility of the user. Additional safety equipment may be required by the particular location and application of product.*

**Irish Manufacturing Services Limited, 34a Dunroe Road, Clogher,  
Co. Tyrone, N. Ireland BT76 0Dz  
Tel. +44 (0)28 8554 9656 E-mail info@ims-ltd.ie website; www.ims-ltd.ie**